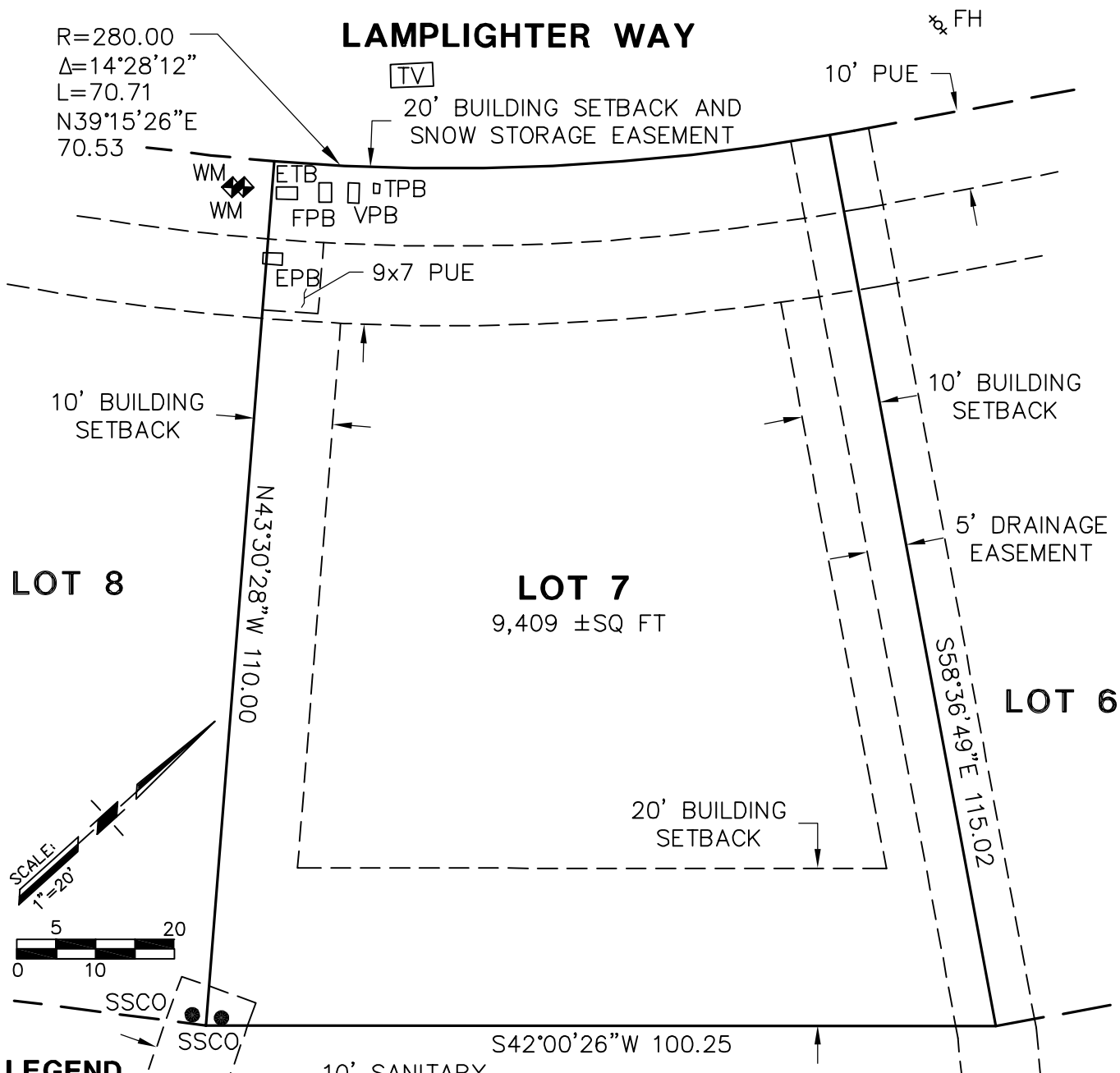


LAMPLIGHTER WAY

R=280.00
 $\Delta=14^{\circ}28'12''$
 L=70.71
 N39°15'26"E
 70.53



LEGEND

- WM - WATER METER
- FH - FIRE HYDRANT
- VPB - CABLE PULL BOX
- TV - TELEPHONE VAULT
- EPB - ELECTRIC PULL BOX
- TPB - TELEPHONE PULL BOX
- FPB - FIBER OPTIC PULL BOX
- PUE - PUBLIC UTILITY EASEMENT
- ETP - ELECTRIC TRANSFORMER PAD
- SSMH - SANITARY SEWER MAN HOLE
- SSCO - SANITARY SEWER CLEAN OUT

LOT A

PLOT PLAN
DONNER CREST LOT 7
8 SUBS 134 N.C.R.
SEC. 9, T.17 N., R.16 E., M.D.M.
TOWN OF TRUCKEE
NEVADA COUNTY, CALIFORNIA
SCALE: 1"=20' OCTOBER 6, 2005

ANDREGG
GEOMATICS
 www.andregg.com
 800-400-7072

THE ENGINEER PREPARING THIS PLOT WILL NOT BE RESPONSIBLE FOR, OR LIABLE FOR, UNAUTHORIZED CHANGES TO OR USES OF THIS PLOT. ALL CHANGES TO THIS PLOT MUST BE IN WRITING AND MUST BE APPROVED BY THE ENGINEER AND DONNER CREST LLC. THE INFORMATION ON THIS PLOT PLAN IS PROVIDED FOR YOUR CONVENIENCE AS A GUIDE TO THE GENERAL LOCATION OF THE SUBJECT PROPERTY. THE ACCURACY OF THIS PLOT PLAN IS NOT GUARANTEED. NOR IS IT A PART OF ANY POLICY, REPORT, OR GUARANTEE TO WHICH IT MAY BE ATTACHED. ACTUAL DIMENSIONS MAY VARY OR CHANGE WITHOUT PRIOR NOTICE DUE TO ACTUAL SITE CONDITIONS.